

Pacific Motorway Upgrade Project

Springwood (south) to Daisy Hill



Changes have been made at motorway Exit 25 to improve traffic flow while new motorway on / off-ramps are constructed at Winnetts Road.

Welcome to the May 2010 construction update. The \$420 million Pacific Motorway upgrade between Springwood (south) and Daisy Hill will improve access, traffic flow and safety in Logan City. The project is the first priority stage of an upgrade of the Pacific Motorway from the Gateway to Logan Motorway.

Project works will include rehabilitating the motorway from Springwood (south) to Daisy Hill, a major upgrade of the Loganlea Road interchange, improvements to the Paradise Road roundabout, constructing a bus stop and park 'n' ride, and a new section of bikeway. Completion is expected in late 2011, weather permitting.

Current works and traffic changes

The first stage of the new Loganlea Road overpass bridge is commencing this month, with the project team busy building foundations on the Winnetts Road side of the motorway.

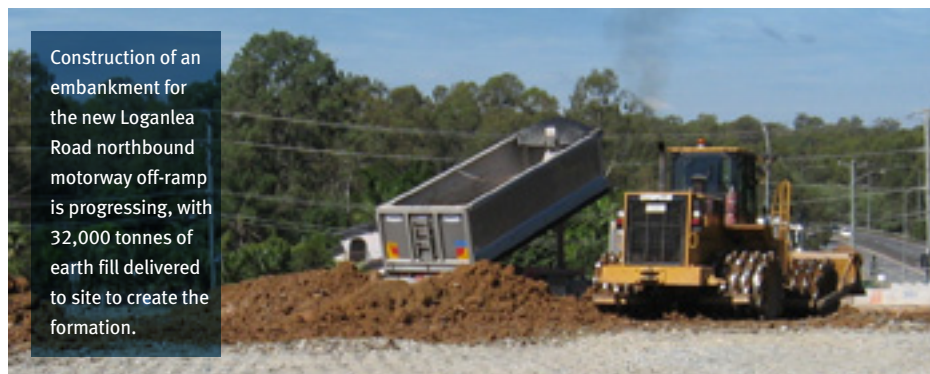
Pacific Motorway speed limits

For the safety of roadworkers and road users, the speed limit on the Pacific Motorway within the project zone will be progressively reduced to 80km/h from June 2010. Concrete traffic control barriers will be set up along this section of

the motorway to create a safe work zone. These controls will remain in place during the upgrade of the motorway.

Night works will continue on the Pacific Motorway this month, with the construction of new road shoulders and laying of asphalt to improve the road surface.

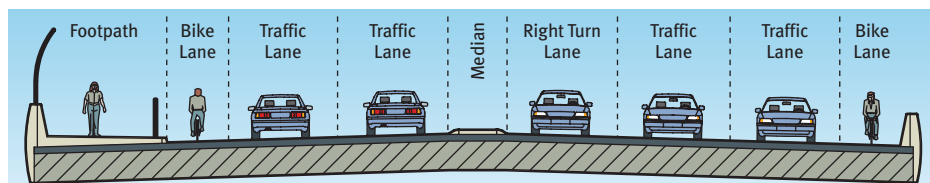
Loganlea Road / Nujooloo Road area



Construction of an embankment for the new Loganlea Road northbound motorway off-ramp is progressing, with 32,000 tonnes of earth fill delivered to site to create the formation.

The new embankment for the Loganlea Road northbound motorway off-ramp is taking shape, with around 32,000 tonnes of earth fill used to create the formation. During daytime working hours, trucks will deliver earth fill to the work site via Loganlea and Nujooloo Roads.

Construction of a temporary detour around the existing Loganlea Road / Nujooloo Road intersection is continuing. Activities include earthworks, drainage, lighting and pavement installation. Some night works may be required to complete these works safely. When operational, the detour will maintain local traffic flow so that construction can commence on the new intersection (map to be provided next month).



The new Loganlea Road overpass will significantly increase capacity for cross-motorway trips. The overpass includes five general traffic lanes and provisions for pedestrians and cyclists.

Winnetts Road area

Construction on the first stage of the new five-lane Loganlea Road overpass is starting. Current activities include piling on the Winnetts Road side of the motorway, which may result in some localised noise and vibration.

Work on the new southbound motorway on / off-ramps and a retaining wall on the motorway side of Winnetts Road are continuing. Some short-term lane closures may be required during daytime work hours to complete the works safely.

The Winnetts Road southbound motorway on-ramp will remain closed until mid to late 2010, when the new Winnetts Road on-ramp is operational. A temporary alternative route to the Pacific Motorway via the existing southbound on-ramp at Shailer Road has been provided, and is clearly signposted.

Services relocations will continue in Winnetts Road between John Paul Drive and Vine Street. These relocations may result in some localised noise, dust, vibration and night works, however every effort will be made to minimise these impacts.

Western Service Road area

Drainage improvements along the Western Service Road are underway, ready for upgrade works to commence in this area.

Safety and access

Please take care when travelling around the roadworks. Speed limits may be reduced in some areas. All traffic changes will be signposted and traffic controllers will be in place to direct motorists, pedestrians and cyclists as required. Detour paths around roadworks will also be provided for pedestrians and cyclists as required.

Every effort will be made to minimise disruption to residents and motorists, and we thank you for your patience and cooperation during these important works.

Upcoming works (June 2010)

Next month, the project team will focus on progressing the first stage of the Loganlea Road overpass, the Winnetts Road motorway on / off-ramps, and the Loganlea Road / Nujooloo Road detour. Night works will also continue on the Pacific Motorway.

Find out more

General enquiries:

- Freecall 1800 024 288
(Higher rates apply from mobile phones and pay phones. STD rates apply if calling from outside south east Queensland)
- Email pacmwy@tmr.qld.gov.au

Project plans/information:

- Visit www.tmr.qld.gov.au
(Search projects for Pacific Motorway Upgrade Springwood south to Daisy Hill)

Site office:

- Phone (07) 3380 5100
During business hours